

Technical Data Sheet

Aluminum Framed Folding Door

Folding doors Aadco is a aluminum framed system where doors are united with hinges and top mechanism so as pulling the first door will lead the others together.

The doors are applied into track rail which is fixed on top and slide using special rollers that provide smooth and quiet movement. No further use of extra floor necessary, while door track rail is stability is achieved with the use of either safely locks or floor lathes.



Standard :

Door / Shutter width up to 70 to 75 cm and Height up to 280 to 300 cm

Heavy Duty :

Door / Shutter width up to 70 to 75 cm and Height up to 380 to 400 cm

Aluminum Profile:

Standard anodized aluminum profile

Powder coat any RAL color

Non thermal profile

Glass:

Single Glazed 10 or 12 mm thick

Double Glazed 22 mm thick (6+10+6mm) Clear, Reflected or Tinted

Machanism:

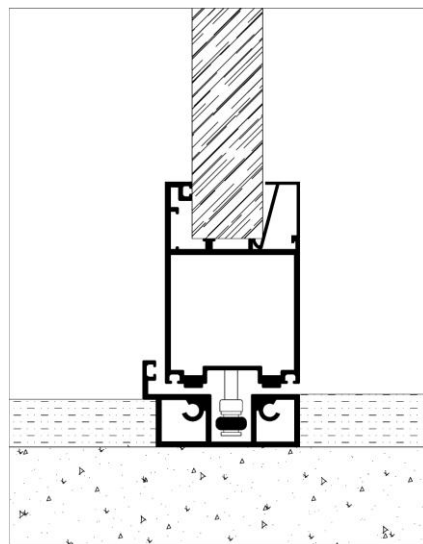
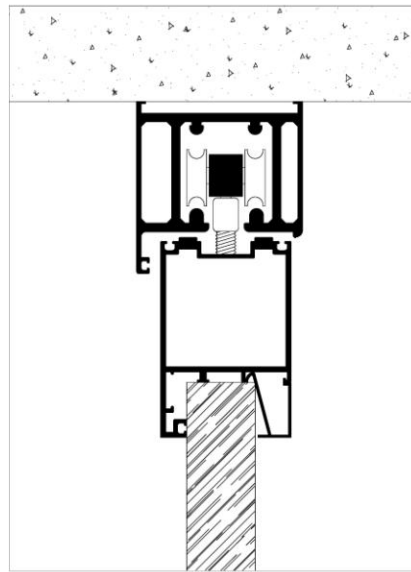
Top Wheel and Bottom Guide

Bottom Wheel and Top Guide

The size of each door varies and can reach up to 70 cm to 75 cm wide and up to 400 cm height. On top and Bottom glass doors are equipped with aluminum Profile . According to the glass holding patent system Sealing between the doors is achieved with Transparent polycarbonate or aluminum profiles That bear synthetic insulating brush. All top and Bottom aluminum profiles are equipped with the same brush in order to satisfactory seal the minor gaps.

Aadco 135 glass sliding door is a simple and functional system,ideal for small openings such as shop windows,room partitions and many others applications always custom to your needs,creates a perfect result capable for many solutions.

Top and Bottom Fixing Details :



Doors / Shutters Combination:



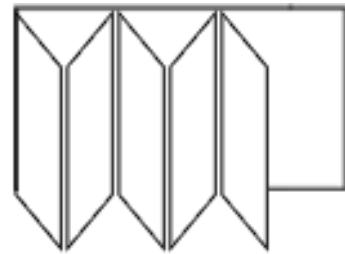
1821 2421
1824 2424
2121 2721
2124 2724

3 Panel



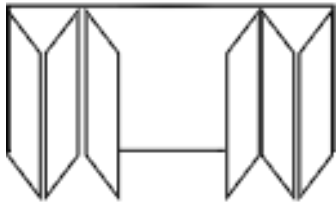
3021
3024

3 + 1 Panel



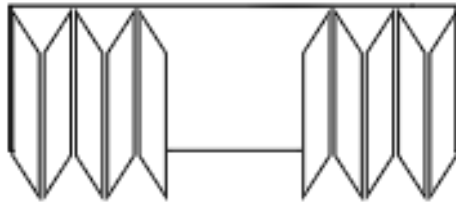
3621
3624
4221
4224

5 Panel



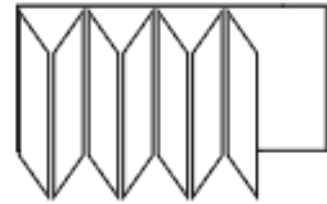
4821
4824
5421
5424

3 + 3 Panel



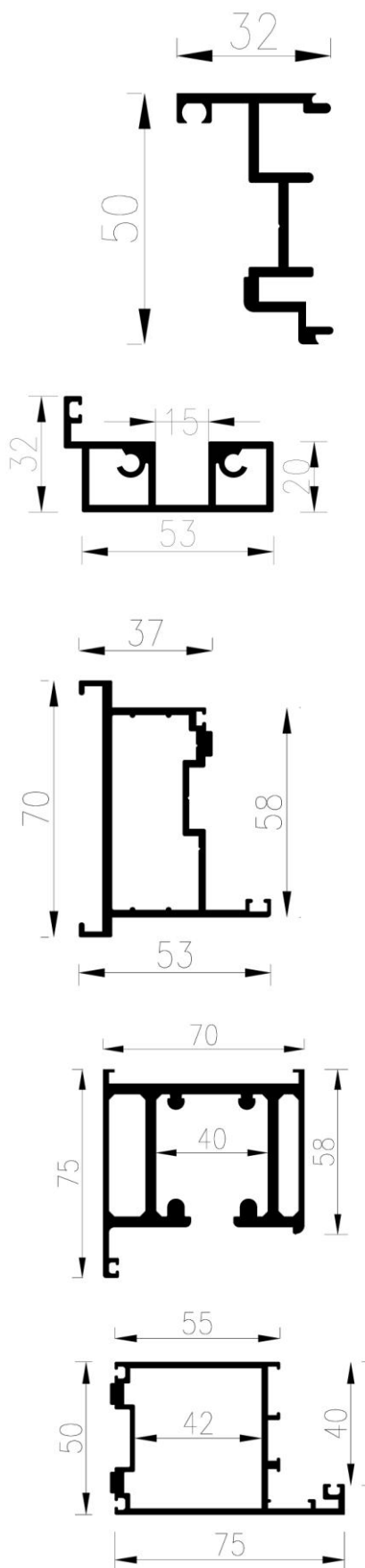
6021
6024

5 + 5 Panel



7 Panel





1	Aluminum track rail 70x40 mm (EN AW-6060 T66) Weight 6 Kg /rm
2	Roller 6053 track rail 70x40mm
3	Roller axle inox M10x65mm
4	Insulation brush 13mm
5	Roller base of galvanized steel 50x30x30mm
6	Aluminum shutter profile anodized 75x40mm(EN AW-6060 T66)weight 8 kg/rm
7	Aluminum cap for coating brace(EN AW-6060 T66)weight 0,53kg/rm
8	Security glass 10 or 12 mm thick
9	Teflon latches body
10	Headless Allen screw M6.Adjust latches holding pressure
11	Roller base of galvanized steel 50x30x20mm
12	Aluminum profile roof spring box 96x73mm Weight 2,15kgr/m
13	Roof spring opening door
14	Galvanized metallic base for holding and clamping glass plate
15	Aluminum part for side holding glass plate
16	Inox screw M20x80mm for side holding glass plate
17	Aluminum part for hanging glass plate onto roof spring

